



Novel Coronavirus or COVID-19 Update

Board Meeting
June 18, 2020
Agenda Item No. 7.1

Presented by:

Presented by: Vincent Harris, Chief of Continuous Improvement
Mary Hardin Young, Instructional Assistant Superintendent
Tu Moua, Instructional Assistant Superintendent
Jennifer Kretschman, "Be Here" Grant Coordinator
Mai Xi Lee, Director of Social Emotional Learning
Matt Turkie, Assistant Superintendent of Curriculum and Instruction
Christine Baeta, Chief Academic Officer
Victoria Flores, Director of Student Support and Health Services
Doug Huscher, Assistant Superintendent, Student Support Services
Nathaniel Browning, Director of Facilities
Sacramento Public Waldorf Collaborative Community

Key Topics

School Closure Dashboard

Virtual Graduation

Sac City Kids Connect

“Unreachable” Students

School Closure Dashboard

Engagement (In development)

Creating an actionable definition for students, principals and teachers

Prioritizing “unreachable” students

Internet Access

Student Support

Identification and supports for students through Early Identification and Intervention (EII) system

Social and Emotional

Targeted questions to assess student connection

Student graduation/college-going progress

On-Track for graduation/A-G completion

Dashboard Outcomes

Number and Percentage of “unreachable” students with whom we have had zero contact since 3/13/20 or who have had zero engagement in Distance Learning is 280 or 0.7%

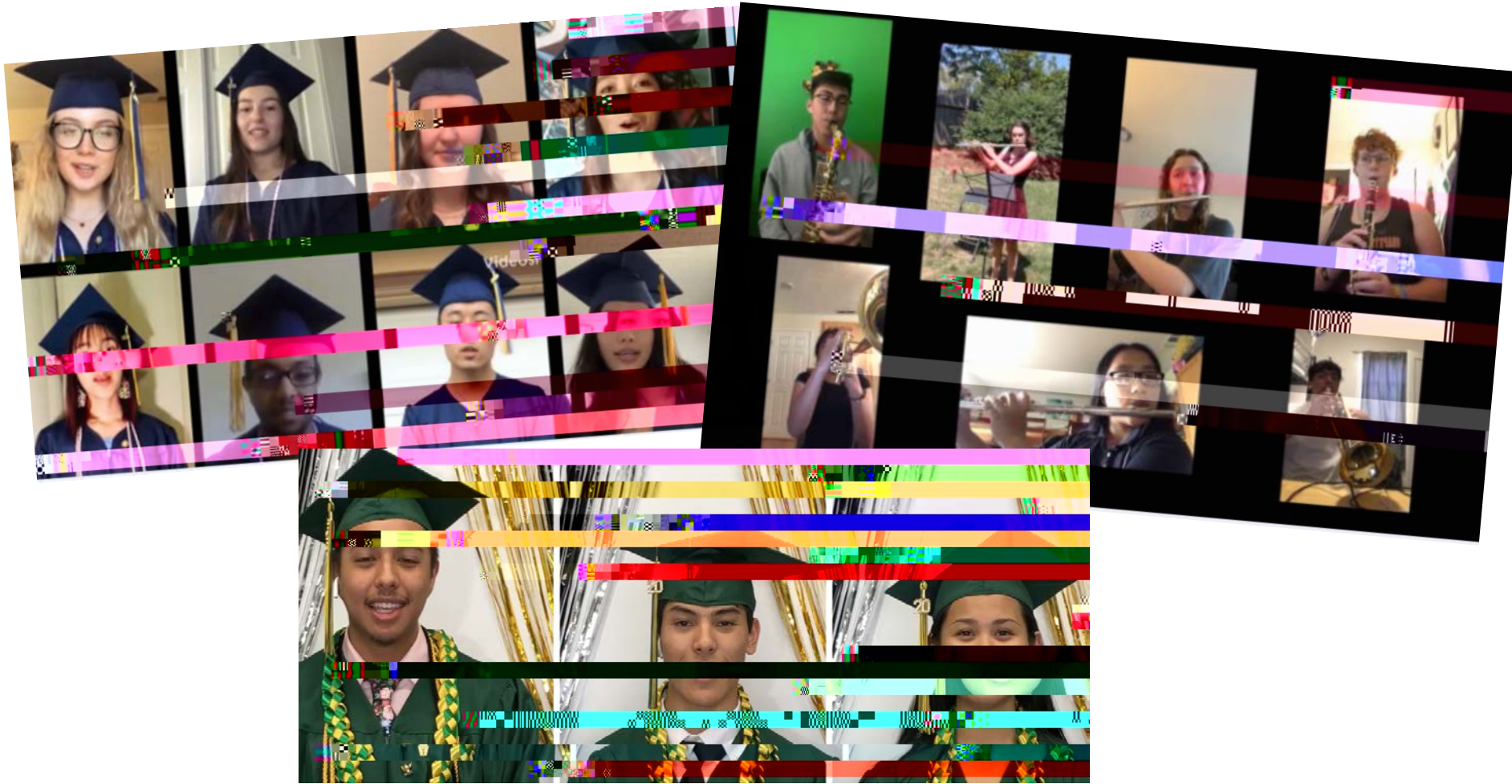
Percentage of unreachable students with at least 1 D or F at the end of quarter 3 is 81% vs. 29% for all students

Number and Percentage of students without access to the internet is 1,643 or 3.9%

Number and Percentage of students without internet access who are eligible for Sac City Connect is 1,498 or 91%

Dashboard Pipeline

Virtual Graduations 2020





Sac City Kids Connect

Principals and/or designees have reached out to eligible families with a unique Sac City Kids Connect code, to apply for Internet Essentials through Comcast

Approximately 1500 students were either referred by staff as needing internet, or self reported through our WebForm 428 unique codes have been provided to families

296 families reported they already have internet, and 221 families reported they are already Internet Essentials customers

Outreach efforts continue with 537 families and staff will work to reach the remaining 10% of families that have been unreachable

Deadline to apply for Internet Essentials is June 30, 2020



Unreachable Students

280 "Unreachable" Students
64 not engaged

Social Emotional Learning Check-in Survey Results

Expanded Learning Summer Programming

Reopening Schools



Areas for planning

- Academics
- Attendance and Engagement
- Culture and Climate
- Nutrition Services
- Public Health

Phased Planning Process

1

Research | Survey | Data Collection

Use guidance from the CA Department of Education, Sacramento County Office of Education, Sacramento County Public Health and community members, students, families, staff

2

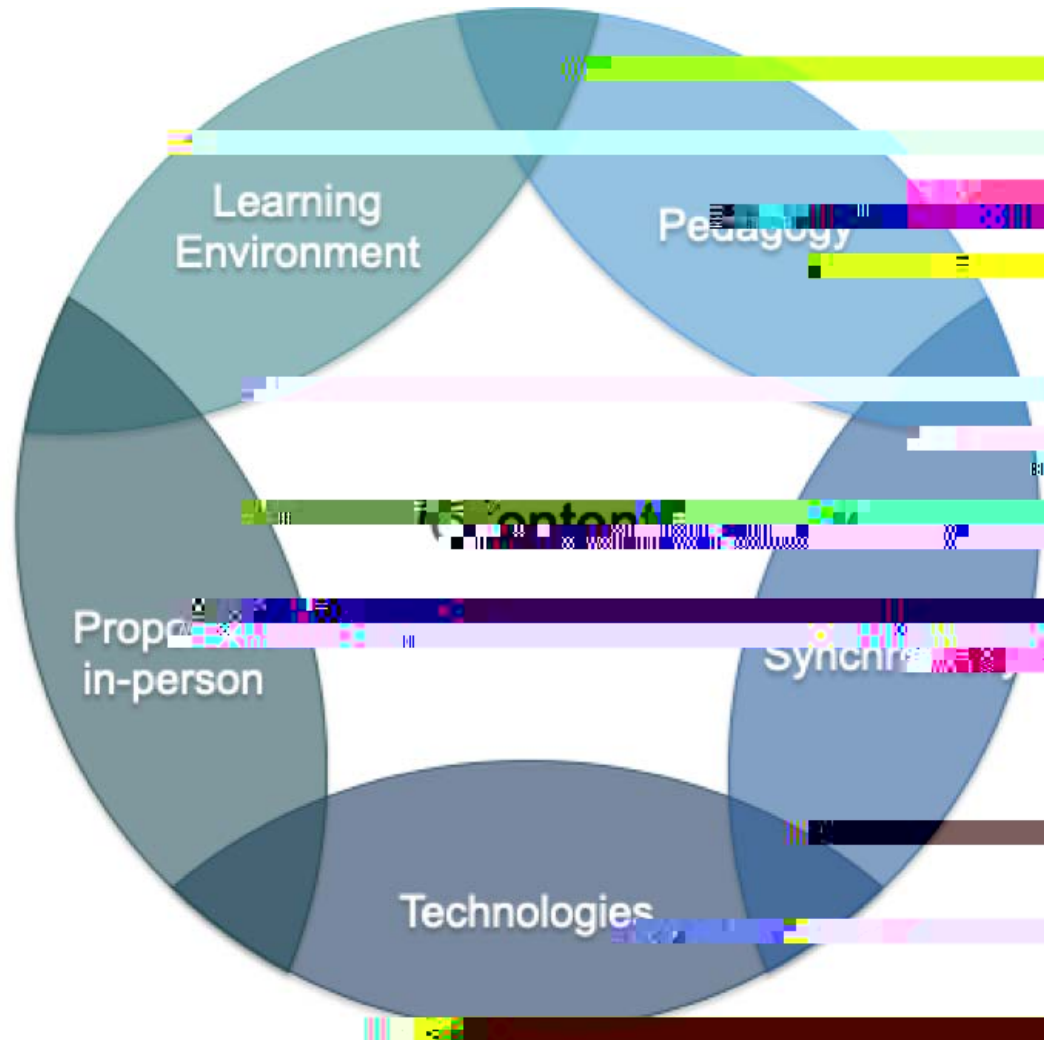
Draft Recommendations

We will use the data to draft recommendations for reopening. We will share this information with our community to seek feedback and discuss any negotiated efforts with relevant stakeholders.

3

Sac City Unified will present its findings to the community and its

Distance Learning Framework



Developing Notion of Engagement

include how a student engaged exclusively in each domain and across all three.

Behavioral Engagement

Cognitive Engagement

Emotional Engagement

Reopening Schools

Athletics

Highest priority is keeping students safe and following the direction of SCPH, CDC, and the state

Plan will be flexible based on changing conditions

CIF has created guidelines for Return to Physical Activity / Training

Districts in the county are meeting to examine protocols
SCUSD in early planning stages

Developing a proposal that follows county guidelines and brings sports back in phases as appropriate

SCUSD aim is to begin conditioning in July

physical distancing, no locker rooms, temperature checks
no equipment, no spectators, appropriate cleaning and PPEs

Civic Permits

Focused on minimizing the spread of COVID-19, but also begin opening up schools for civic use in a thoughtful manner.

Opening up the civic permit process in phases.

First phase is to open civic permits to entities that provide a justifiable social need to our most vulnerable communities.

Additional phases and timelines are yet to be identified. Additional measures and requirements will be put into place as we begin to open the process.

Additional disinfecting costs, requirements for social distancing, and the alike.

Lessons Learned and Next Steps

Ensure the safety of every student, employee, family and community member

Identify emerging best practices in the distance learning process

Create a sustainable and durable definition of engagement

Continue refinement of measurement system

Focus on fall re-opening

Q & A